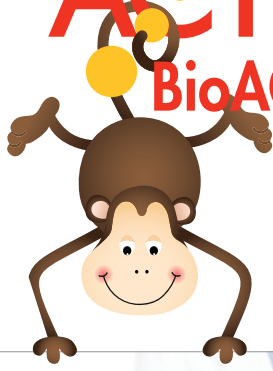


ACTIVA™ Kids

BioACTIVE-RESTORATIVE™



The Future
of Dentistry
Now in
Your Hands



Inspired by Nature • Created for Kids
It's like vitamins for their teeth

PULPDENT®



ACTIVA™ KIDS is an ionic restorative resin that stimulates the natural remineralization process with release and recharge of calcium, phosphate and fluoride ions. It is an opaque white shade ideally suited for pediatric dentistry.

STIMULATES APATITE FORMATION

ACTIVA™ elicits a natural response that restores from within - nature's way - with apatite formation that fills micro-gaps and seals margins against microleakage.

LONG-TERM PATIENT BENEFITS

ACTIVA™ penetrates, protects and preserves teeth. It integrates and becomes part of the tooth providing long-term benefits and healthy smiles, without postoperative tooth sensitivity.

REPLACES GIs AND RMGIs

ACTIVA™ is esthetic, durable and moisture tolerant, and it releases and recharges more calcium, phosphate and fluoride than GIs and RMGIs. It continually adapts to tooth structure with no margins. Bonds and masks silver diamine fluoride stains.

DYNAMIC AND PROACTIVE

ACTIVA™ is a "smart" bioactive material that plays a dynamic role in the mouth. It responds to pH changes with release of protective ions that help build strong, healthy teeth.

EASY TO USE - SIMPLIFIED TECHNIQUE

No capsules or trituration - a simple automix dispensing system with bendable applicator tip for easy access. Easy handling and finishing. Less chair time for your young patients.

SAFE FOR CHILDREN - NO BPA - NO MERCURY

ACTIVA™ KIDS is the perfect amalgam substitute and contains No Bisphenol A, No Bis-GMA, and No BPA Derivatives.

ACTIVA™ is highly acclaimed:

Unique and unprecedented.

– Croll TP, Berg JH, Donly KJ

Outstanding results! – Dr. Mark Cannon

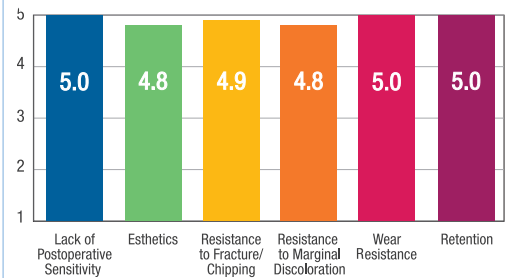
Truly impressive – Dr. Josh Wren

Totally cool and utterly awesome

– Dr. Ted Croll

THE DENTAL ADVISOR + + + + +
98% rating

ACTIVA BioActive-Restorative
Two-year Clinical Performance

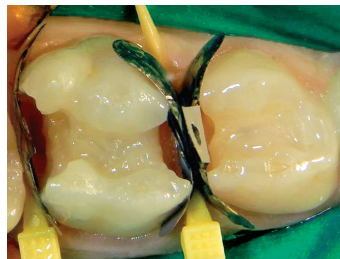


ACTIVA KIDS is a totally cool and utterly awesome dentin and enamel replacement material - a restorative dentistry game-changing advancement. – Dr. Ted Croll

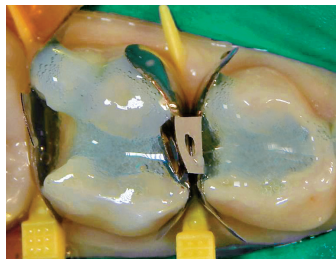
ACTIVA™ KIDS is easy to place and is an opaque white shade ideally suited for primary teeth.



A1 Pre-op shows recurrent decay on restored molars



A2 Prepared teeth



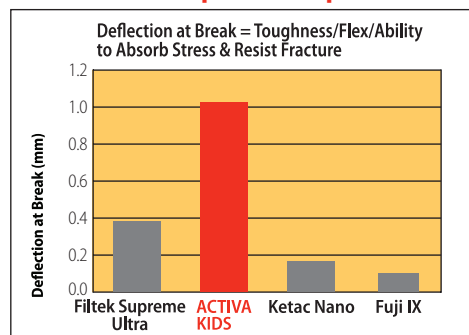
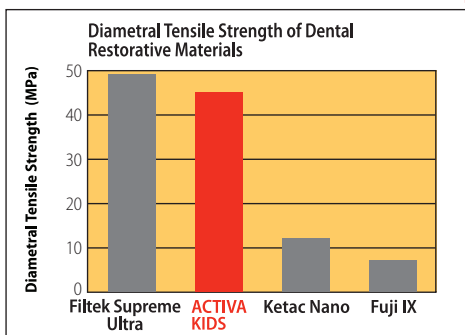
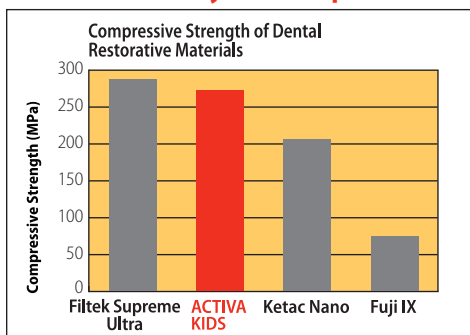
A3 Teeth are etched for 10 seconds



A4 Shows teeth restored with ACTIVA™ KIDS

Photos courtesy of Dr. Mark Cannon

ACTIVA KIDS Physical Properties Outperform RMGIs and GIs and are Comparable to or Surpass Composites



Filtek = Composite; ACTIVA KIDS = Bioactive Restorative; Ketac Nano = RMGI; Fuji IX = Glass Ionomer University testing
 Filtek, Ketac and Fuji IX are trademarks of 3M ESPE, 3M ESPE and GC respectively.

ACTIVA™ KIDS, BioACTIVE-RESTORATIVE™

Requires ACTIVA-SPENSER™

VKP **Starter Kit:** 5mL/8gm syringe Opaque White Shade, ACTIVA-SPENSER™, + 20 automix tips with bendable 20-gauge metal cannula

VK1P **Single Refill:** 5mL/8gm syringe Opaque White Shade, + 20 automix tips with bendable 20-gauge metal cannula

VK2P **Value Refill:** 2 x 5mL/8gm syringes Opaque White Shade, + 40 automix tips with bendable 20-gauge metal cannula

TIPS – APPLICATOR

A20N1 Automix Tips, clear, with bendable 20-gauge metal cannula – pkg of 20

A50N1 Automix Tips, clear, with bendable 20-gauge metal cannula – pkg of 50
 For use with 2.5mL, 5mL and 10mL 1:1 automix syringes

ACTIVA-SPENSER™

For 5mL 1:1 Automix Syringes

DS05 Dispenser for 5mL automix syringe

